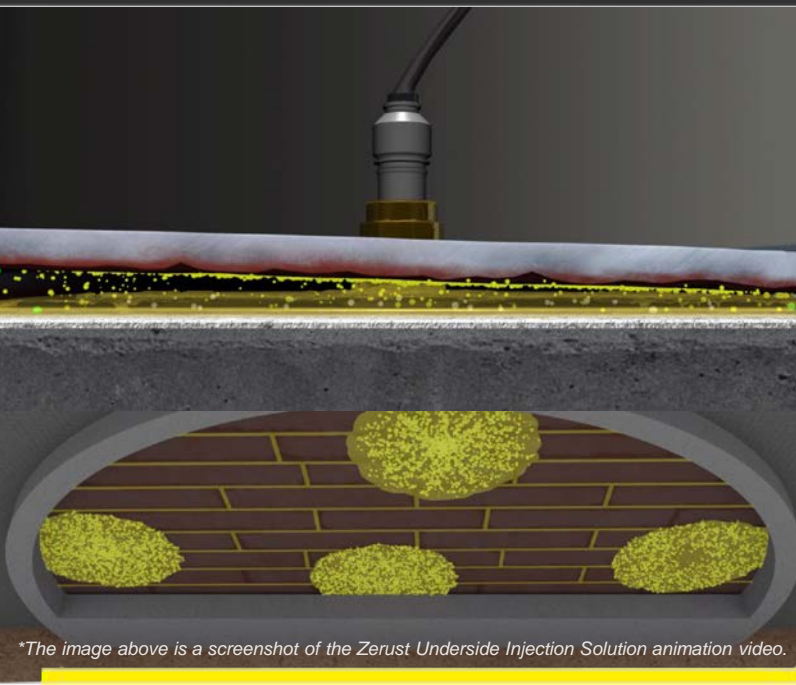


Zerust® Internal Flood Solution for Aboveground Storage Tank



*The image above is a screenshot of the Zerust Underside Injection Solution animation video.

CLIENT APPLICATION Internal Flood | January 2018

Project Summary:

- Zerust Oil & Gas, in collaboration with a contractor, was awarded a project encompassing providing materials and project supervision for the injection of a corrosion inhibiting solution beneath one (1) tank.
- Supervisory services were also to be provided for the inspection of locations for the installation of ER probe corrosion monitoring devices.
- This tank is 178.8-feet in diameter and sits atop a limestone foundation.
- Corrosion data from ER probes previously installed underneath a variety of other tanks was also collected.

Goals and Objectives:

- Inspection of ports installed for corrosion inhibitor slurry injection
- Inspection of locations for installation of ER probe corrosion monitoring devices
- Consultation services during the injection of corrosion inhibitor slurry
- Collection of corrosion data from ER probes installed beneath a variety of other tanks

Product(s) Used:

- Zerion® FVS-B15, Bulk Powder

Zerust® OIL & GAS
WORLDWIDE CORROSION SOLUTIONS

Procedures:

- Ports for the injection of corrosion inhibitor slurry, as installed by contracted construction team, were inspected prior to actual injection.
- Four (4) ports were found to be located approximately 12-meters away from the tank walls, equally spaced around the entire circumference of the tank.
- Additionally, one (1) port was centrally located within the tank floor.
- Locations for the installation of ER probe corrosion monitoring devices were also inspected and noted for future reference.
- Reference FIGURE 1 below for a depiction of the layout of the injection ports and locations for later installation of ER probes.

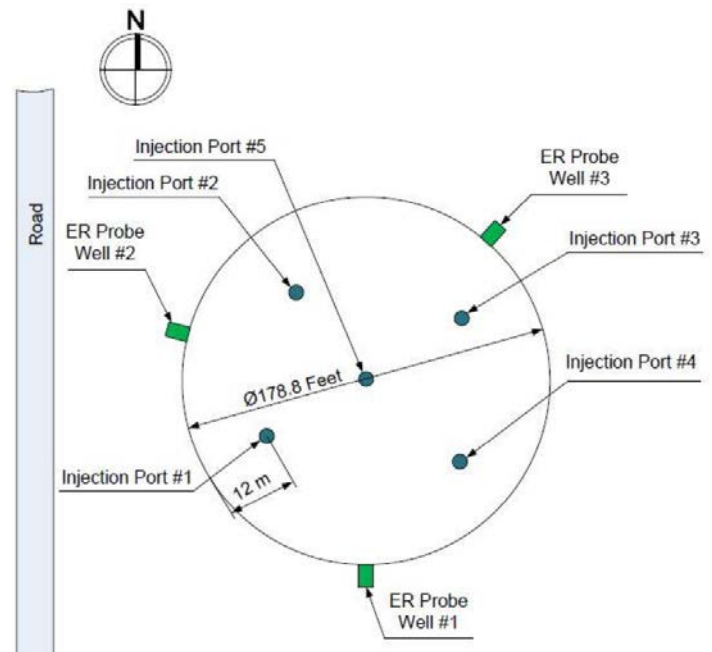


Figure 1 Above: Location of Injection Ports and ER Probe Wells for the tank.

Results and Recommendations:

- The slurry injection beneath Tank 8060 was completed successfully and without any issues.
- Prior to Zerust arrival, all equipment and tools was transferred to the project location by the contracting team. This team also prepared the tank and batches of inhibitor slurry for injection and injected the slurry under Zerust supervision.